

RIAEC  
TILES

# THE ART OF GRACE

200X200MM

MATT WITH LUSTER

**miami**  
COLLECTION

[www.riaec.com](http://www.riaec.com)



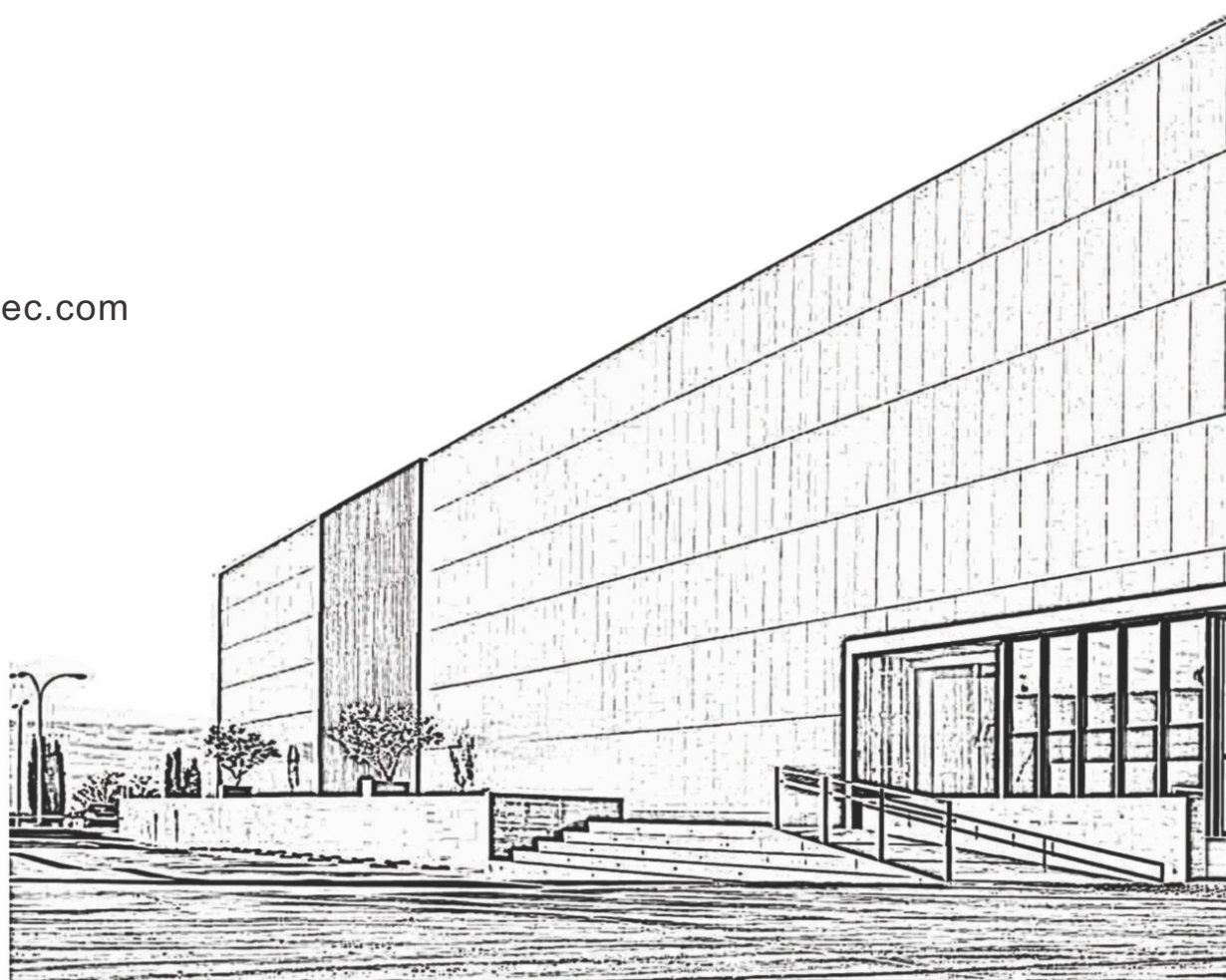
# THE STORY OF RIAEC TILES

Riaec Tiles has been a pioneer in the small format ceramic tile production from India . Riaec Tiles was started with the purpose of developing the best collection in the small format ceramic tile for the bathroom , kitchen and other decoration based applications in the residential and commercial space .

Riaec Tile has been providing the biggest range of subway base color tile collection as well as the ever developing range in the digital printing collection . With the use of 12 color System Digital Printing Machinery , we are able to produce the biggest range of colors , applications and surface possible in the Riaec Tiles produced in India.

Riaec Tile has potentially the biggest distribution centre with the help of our supplier, stockist and retail counters across all the states of India. Riaec has always been popular in the international market and with our high standards of quality and design portfolio, we are developing a strong market presence internationally.

[www.riaec.com](http://www.riaec.com)



**miami**  
COLLECTION

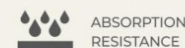
**200X  
200MM**



[www.riaec.com](http://www.riaec.com)



FROST  
PROOF



ABSORPTION  
RESISTANCE



EASY  
TO INSTALL



STAIN  
RESISTANCE



EASY TO  
CLEAN



ECOLOGICAL



CHEMICAL  
RESISTANCE

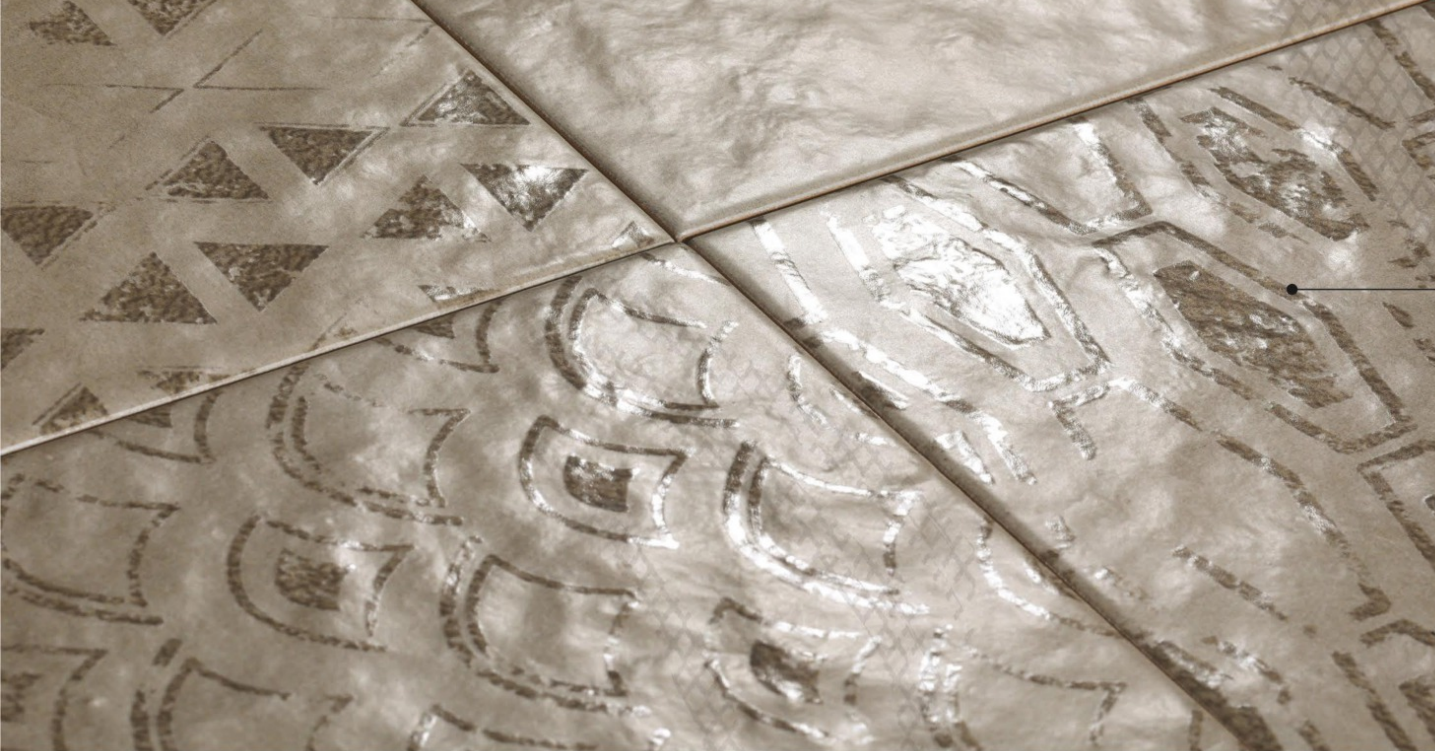


SCRATCH  
RESISTANCE



THERMIC IMPACT  
RESISTANCE





**200x  
200mm**

matt with luster  
(punch)



Chemical  
Resistant



Heat & Fire  
Resistant



Abrasion  
Resistant



High Tensile  
Strength



Less Water  
Absorption



Environment  
Friendly



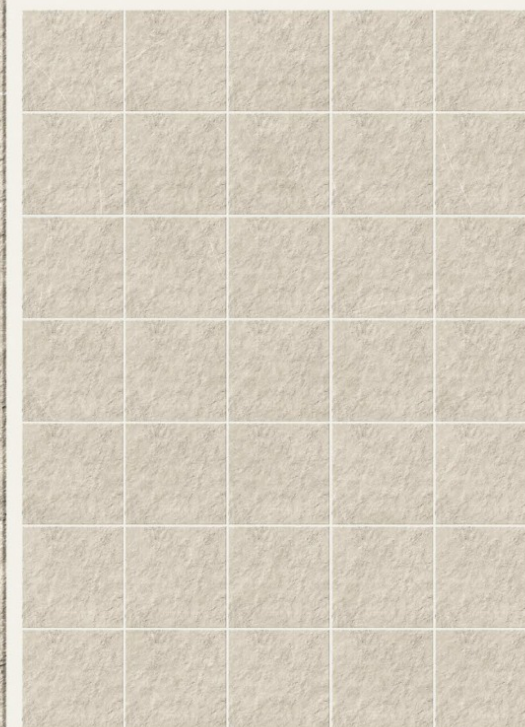
**GLAM BEIGE**



random **36**



**GLAM BEIGE BASE**



random **25**





HAVE FUN  
LAUGH OFTEN & LOUD  
TRUST LIFE  
KEEP YOUR MIND OPEN  
WEAR A SMILE  
LET SOMEONE IN  
LOVE THE WORLD SOME LOVE

LOVE & L  
GOOD, CATS AND A  
LOVE ME, MY BOY  
DID I PLAN THAT?  
HORSES, GARDENS, HOMES  
MEMORIES  
COCKTAILS AND SHOTS  
SCOOTER - NO (ALMOST)  
HOLD ME - LONELY, WINDY  
LAUGHTER, FUN, WIND, FRODO

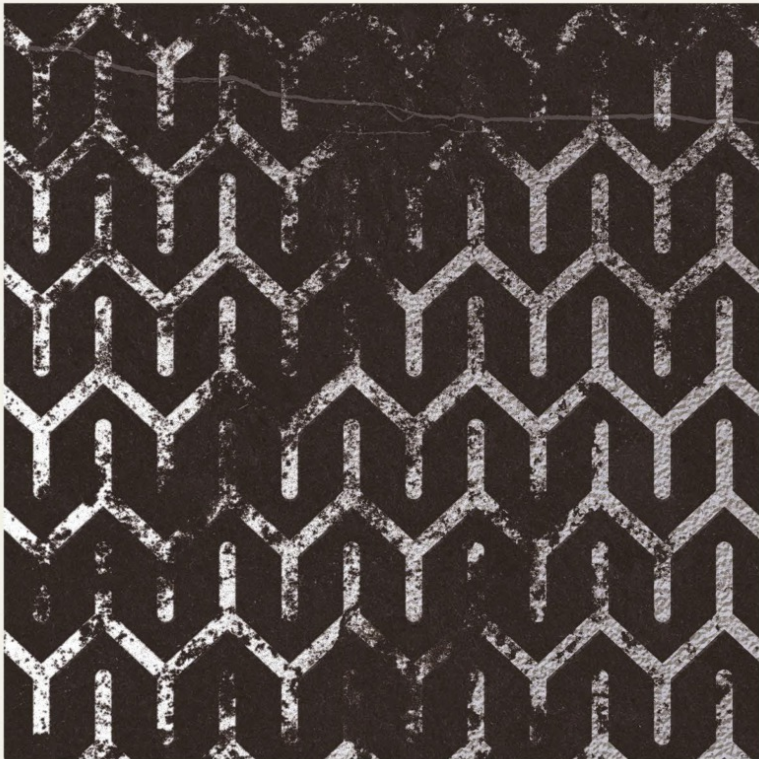
I WANT TO LAY LIKE THIS FOREVER UNTIL THE SKY FALLS DOWN ON ME  
I CAN'T YOU SEE IT BABY YOU DON'T HAVE TO CLOSE YOUR EYES CAUSE IT'S STANDING RIGHT BEFORE YOU  
I'LL BE YOUR DREAM, I'LL BE YOUR WISH I'LL BE YOUR FANTASY I'LL BE YOUR HOPE  
I'LL BE YOUR LOVE, BE EVERYTHING THAT YOU NEED  
I'LL LOVE YOU MORE WITH EVERY BREATH TRULY, MADLY, DEEPLY DO  
I WANT TO STAND WITH YOU ON A MOUNTAIN  
I WANT TO BATHE WITH YOU IN THE SEA  
I WANT TO LAY LIKE THIS FOREVER UNTIL THE SKY FALLS DOWN ON ME  
**MARK & LISA 09.10.01**



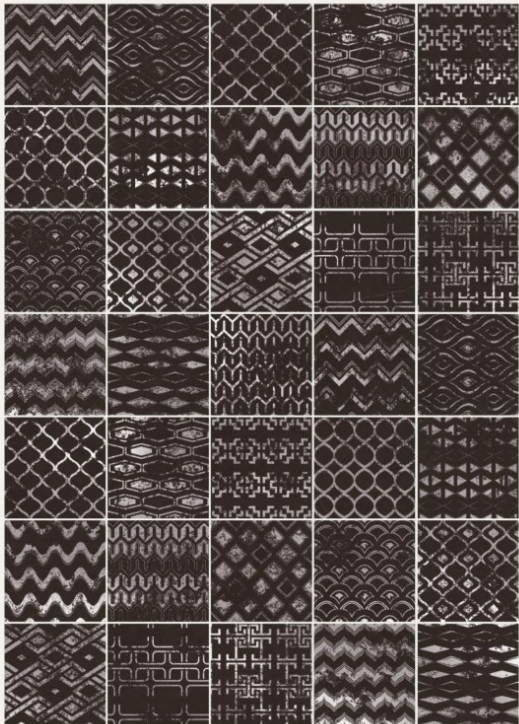


- Chemical Resistant
- Head & Fire Resistant
- Abrasion Resistant
- High Tensile Strength
- Less Water Absorption
- Environment Friendly

200x  
200mm  
matt with luster  
(punch)



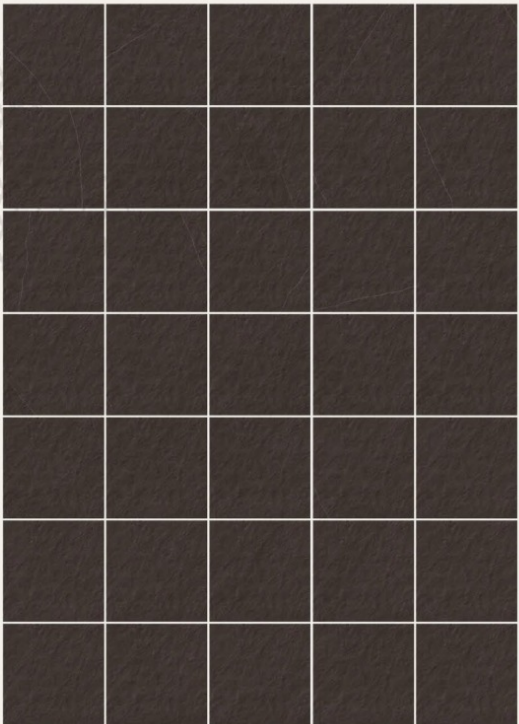
GLAM COFFEE



random 36



GLAM COFFEE BASE

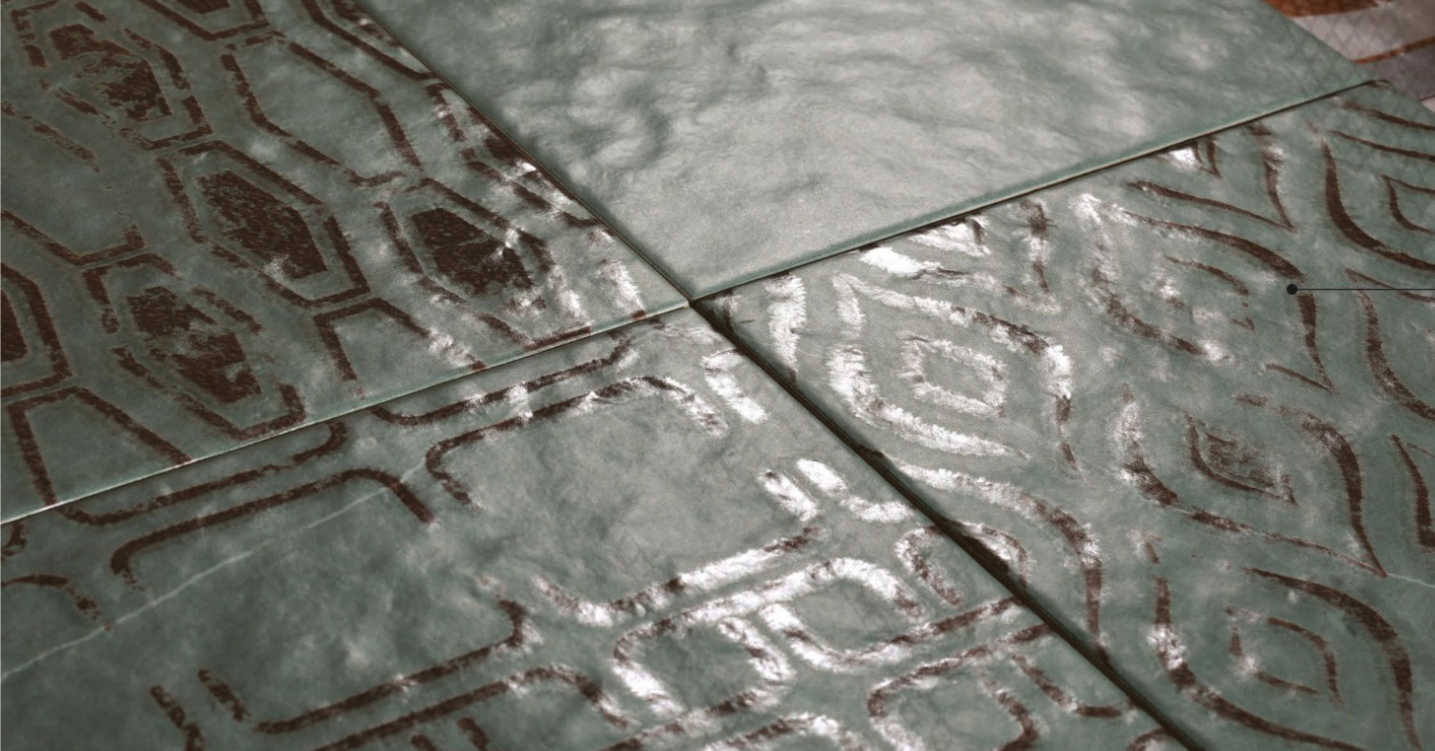


random 36









**200x  
200mm**

matt with luster  
(punch)



Chemical  
Resistant



Heat & Fire  
Resistant



Abrasion  
Resistant



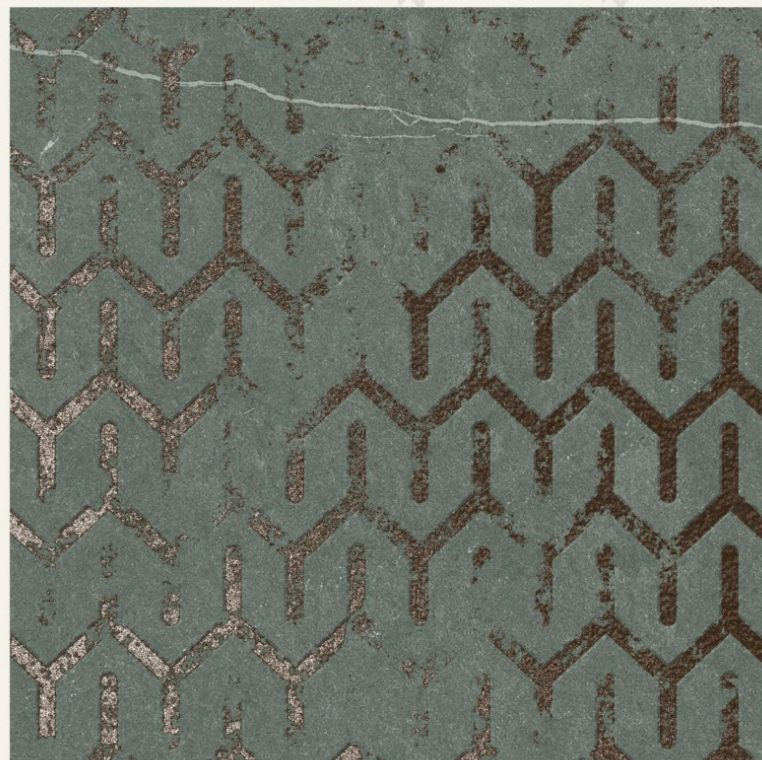
High Tensile  
Strength



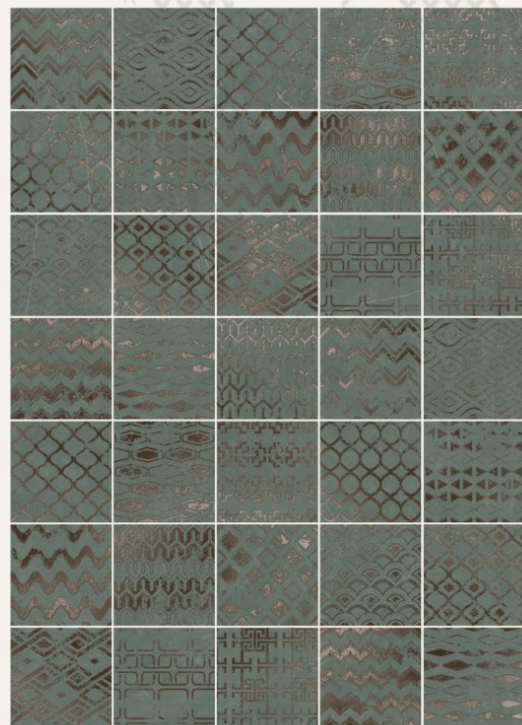
Less Water  
Absorption



Environment  
Friendly



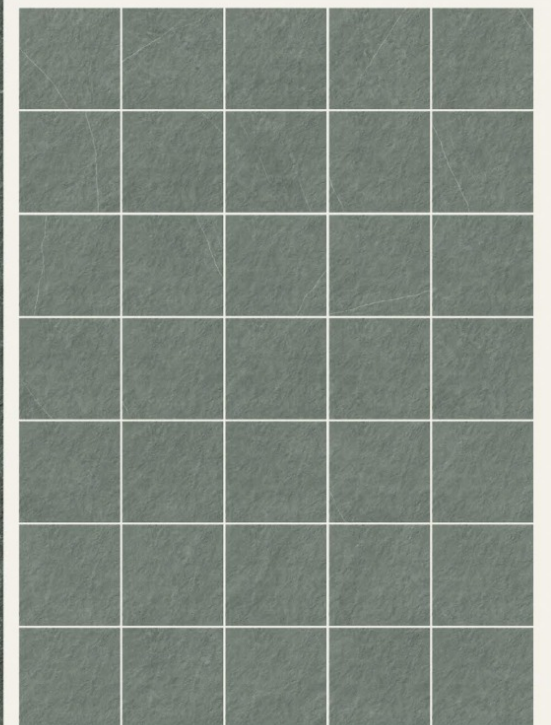
GLAM GREEN



random 36



GLAM GREEN BASE



random 36

**miami**  
COLLECTION

[riaec.com](http://riaec.com)

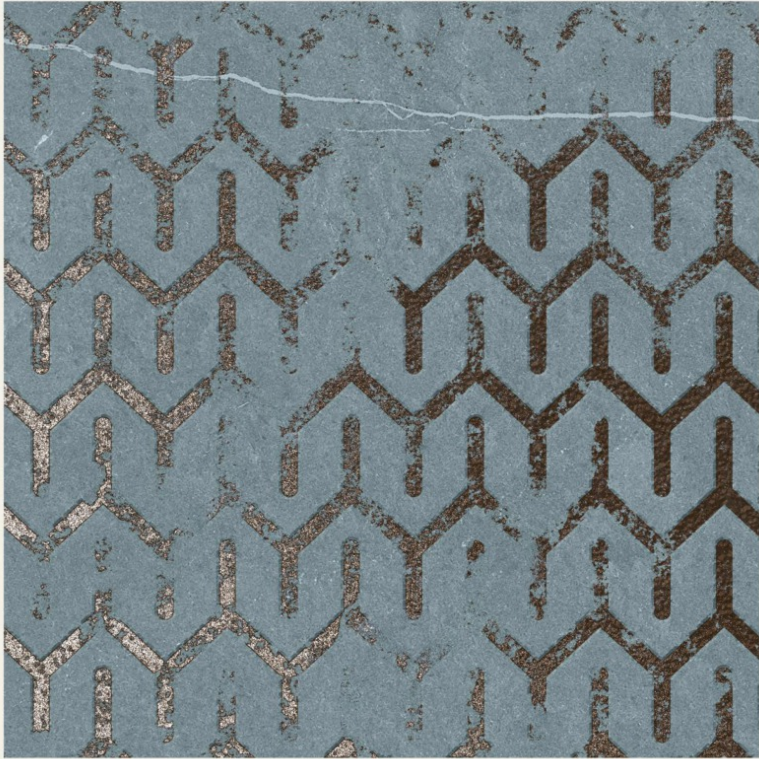
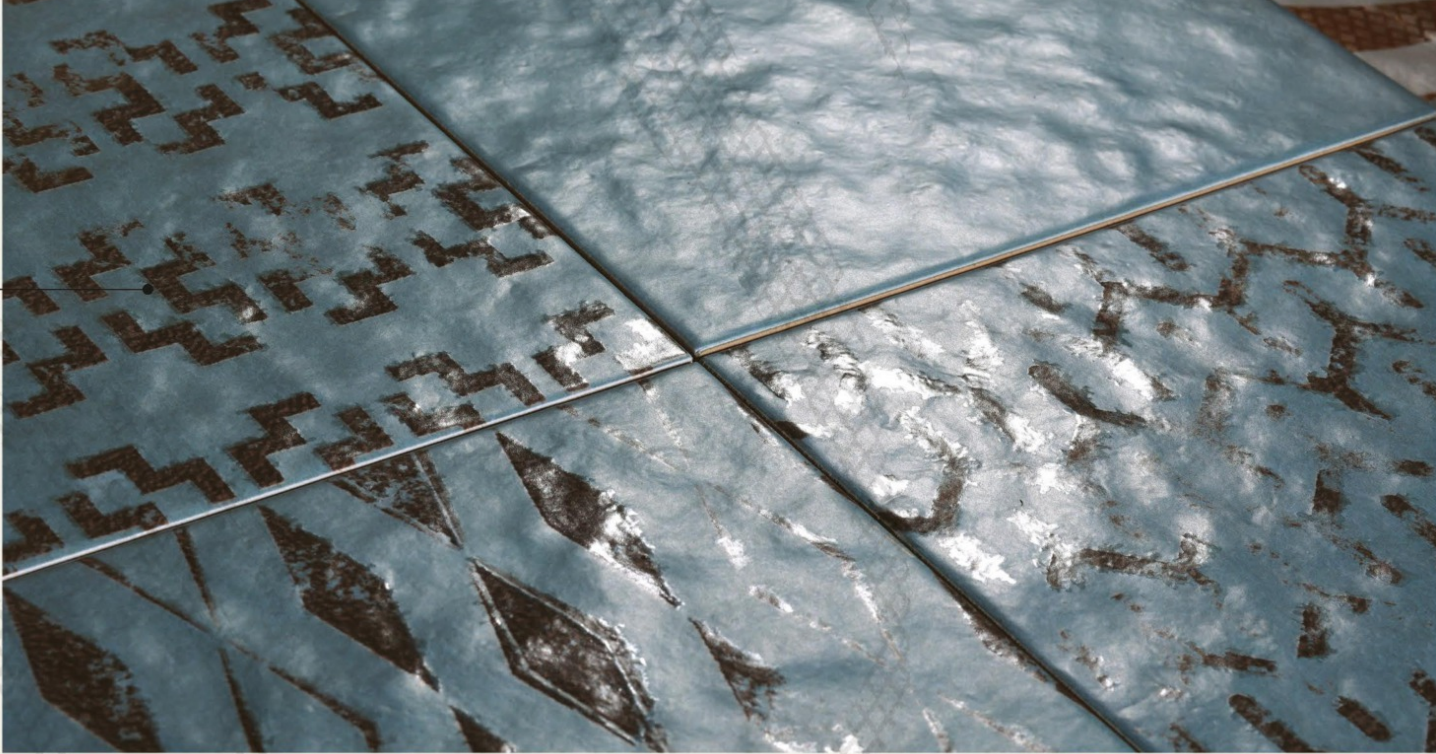




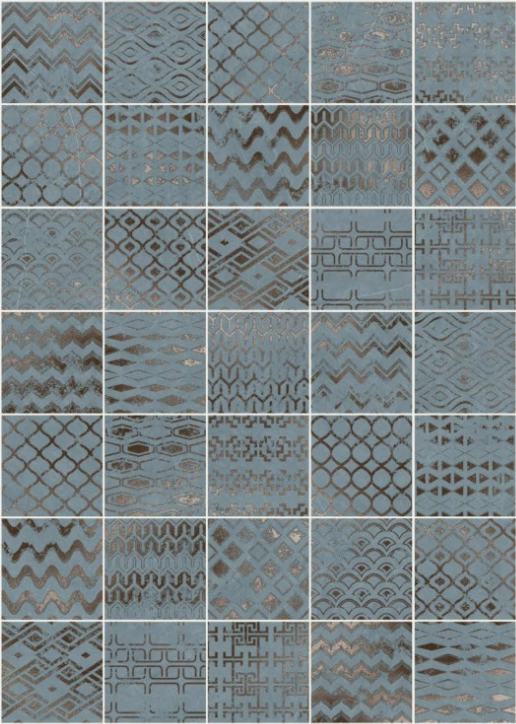


- Chemical Resistant
- Head & Fire Resistant
- Abrasion Resistant
- High Tensile Strength
- Less Water Absorption
- Environment Friendly

200x  
200mm  
matt with luster  
(punch)



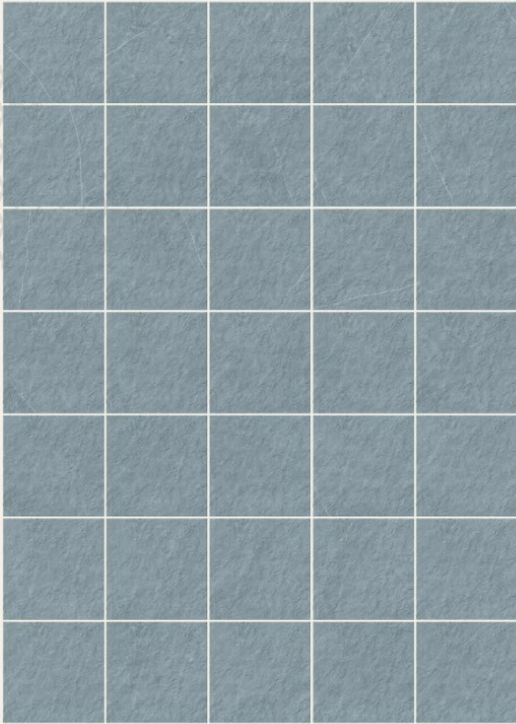
GLAM SKY



random 36



GLAM SKY BASE



random 36









**200x  
200mm**

matt with luster



Chemical  
Resistant



Heat & Fire  
Resistant



Abrasion  
Resistant



High Tensile  
Strength



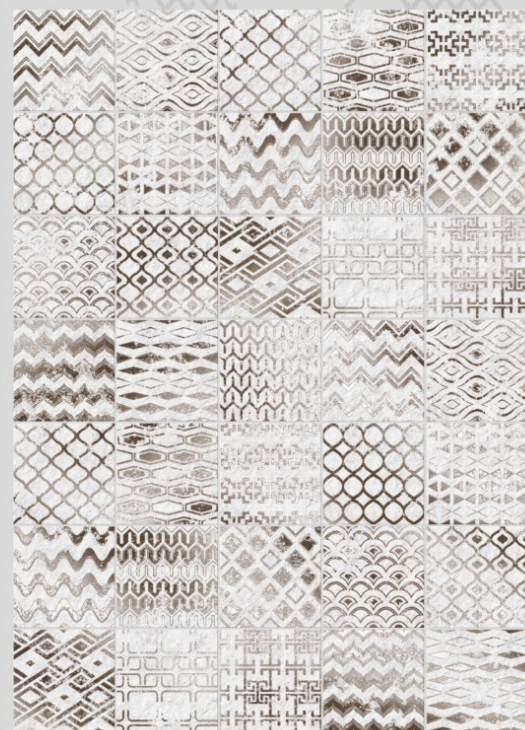
Less Water  
Absorption



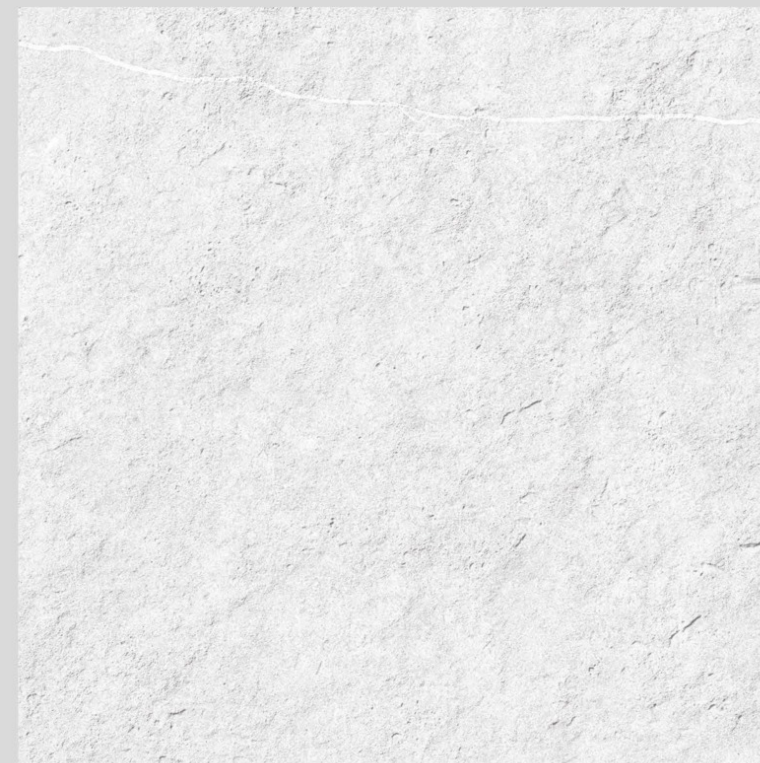
Environment  
Friendly



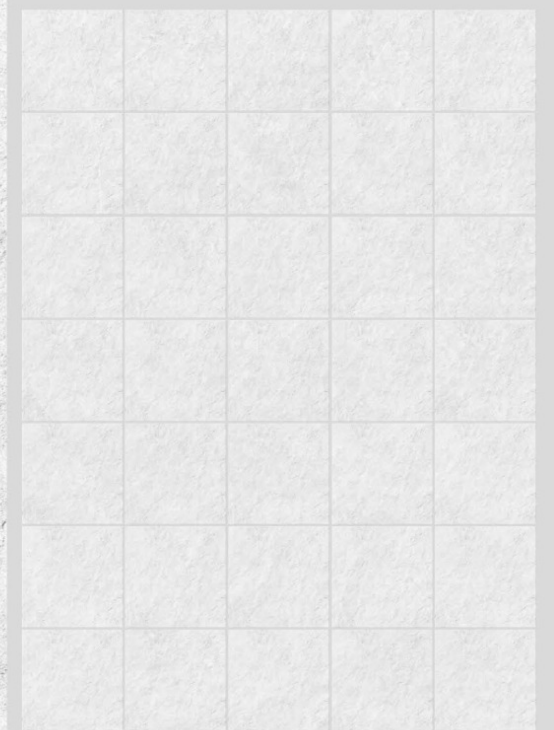
GLAM WHITE



random 36



GLAM WHITE BASE



random 36

**miami**  
COLLECTION

[riaec.com](http://riaec.com)









**200x  
200mm**  
matt with luster



Chemical  
Resistant



Head & Fire  
Resistant



Abrasion  
Resistant



High Tensile  
Strength



Less Water  
Absorption



Environment  
Friendly



LILAC AMAZONIA



random 12



LILAC FIORE



random 08



LILAC BASE



random 08

**miami**  
COLLECTION

riaec.com





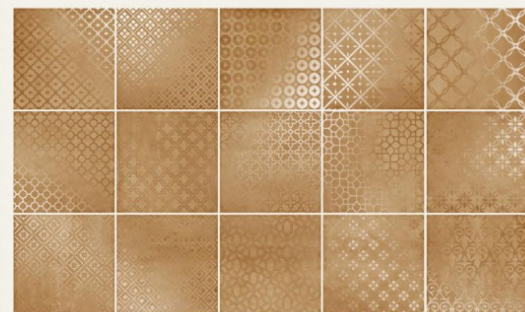




**200x  
200mm**  
matt with luster



**MALTA JAISALMER**



random 15

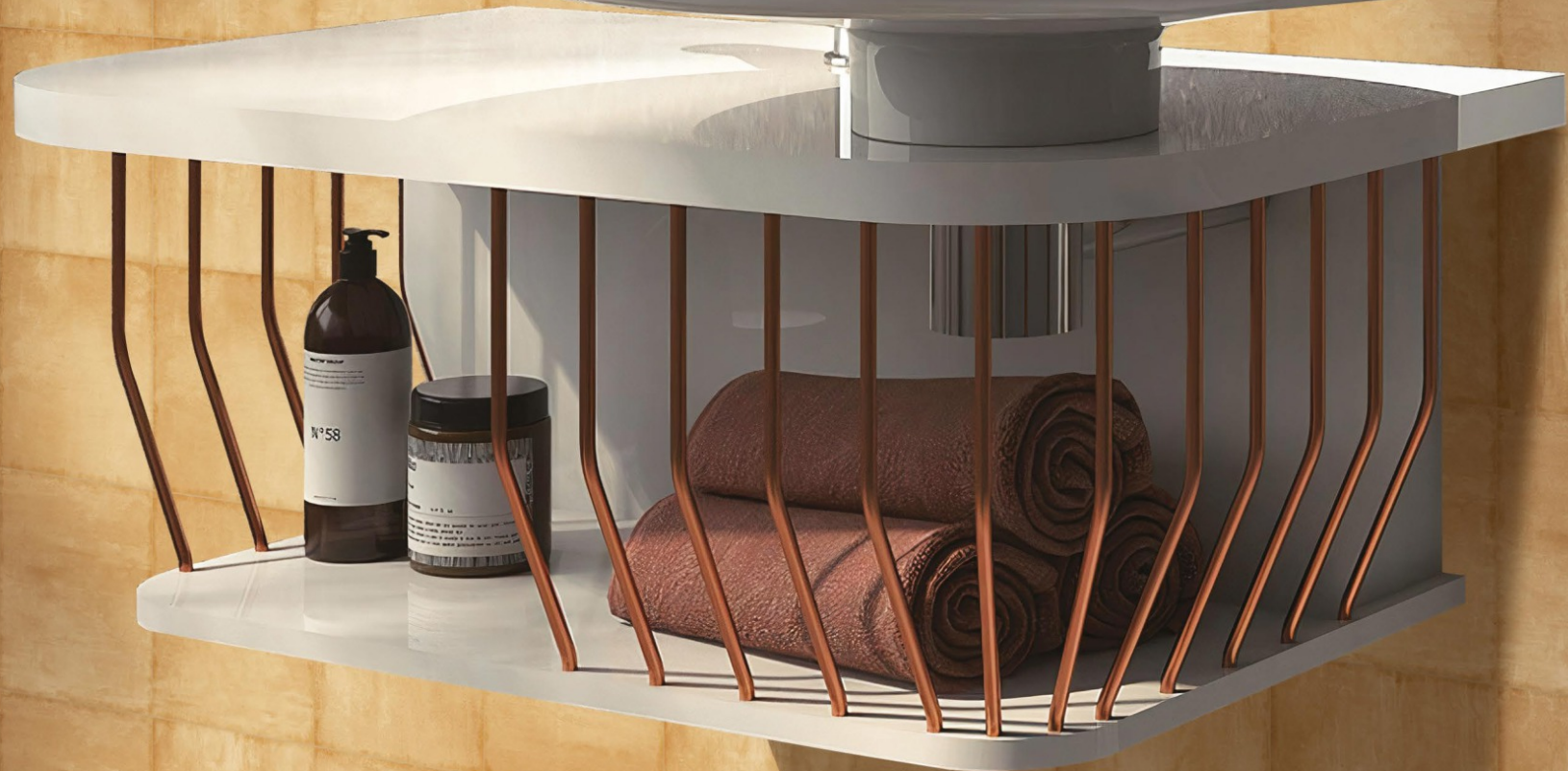


**MALTA JAISALMER BASE**



random 15









Chemical  
Resistant



Heat & Fire  
Resistant



Abrasion  
Resistant



High Tensile  
Strength

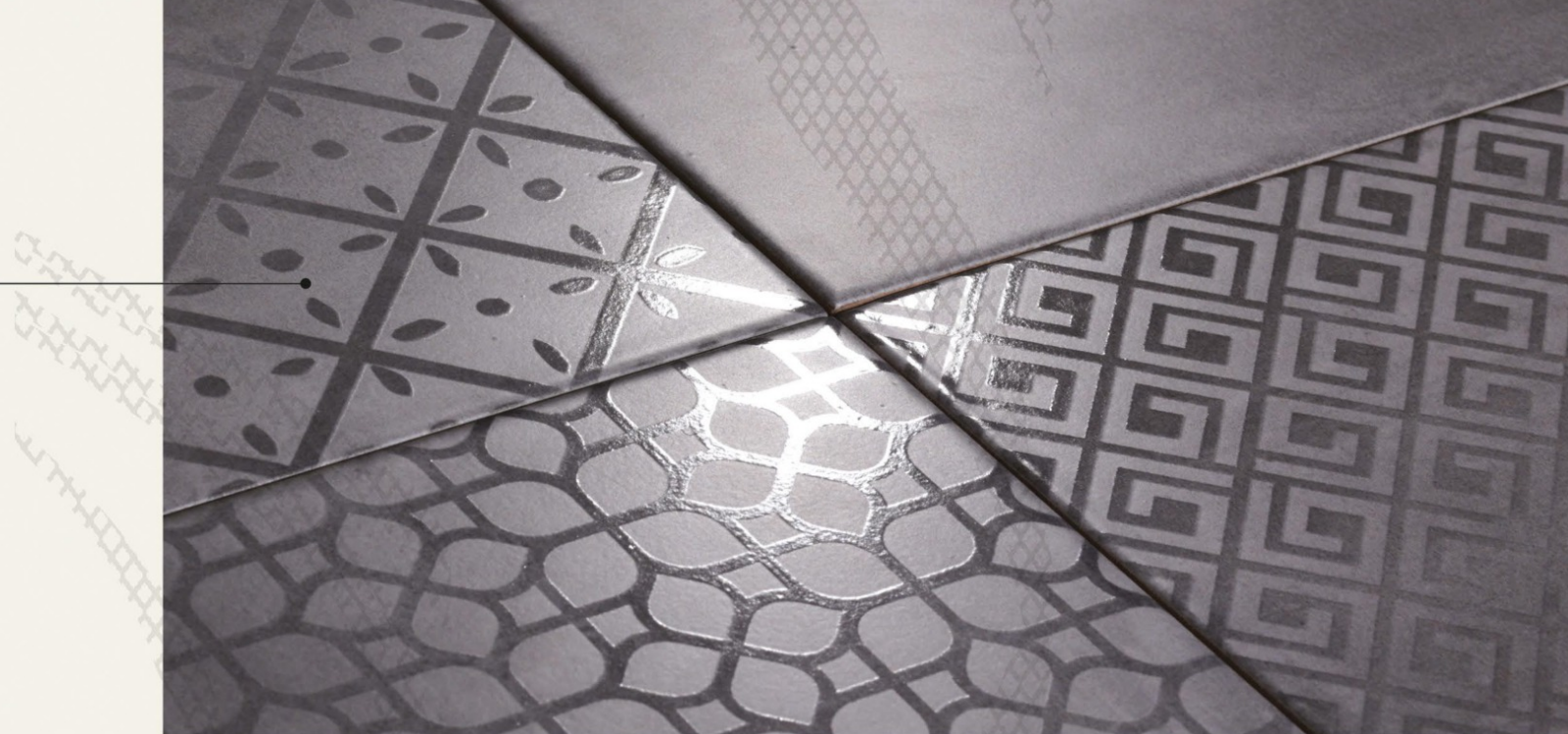


Less Water  
Absorption



Environment  
Friendly

**200x  
200mm**  
matt with luster



**MALTA BIANCO**



random 15



**MALTA BIANCO BASE**



random 15









**200x  
200mm**  
matt with luster



Chemical  
Resistant



Heat & Fire  
Resistant



Abrasion  
Resistant



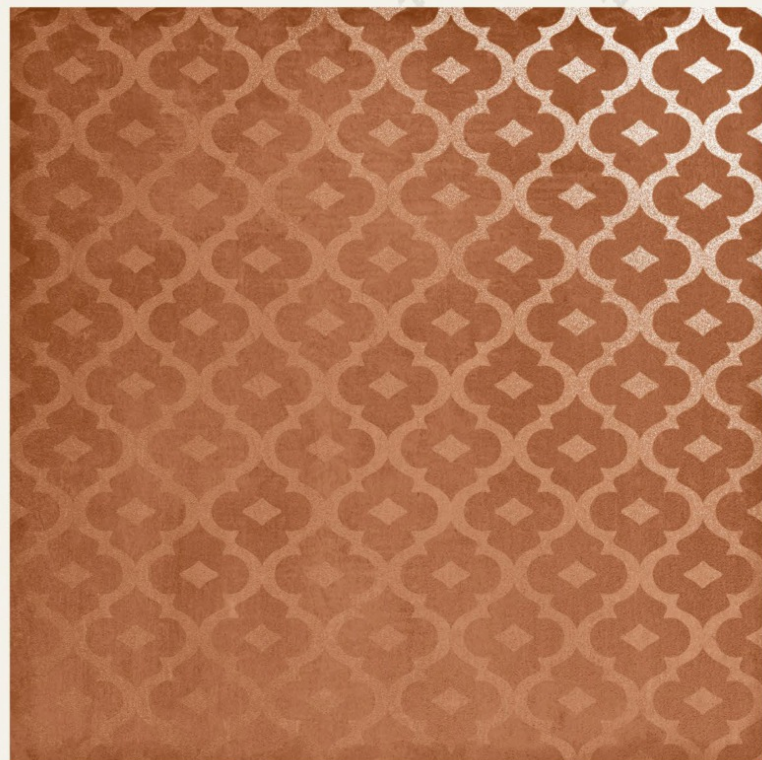
High Tensile  
Strength



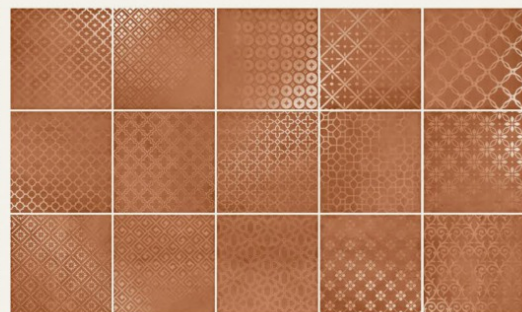
Less Water  
Absorption



Environment  
Friendly



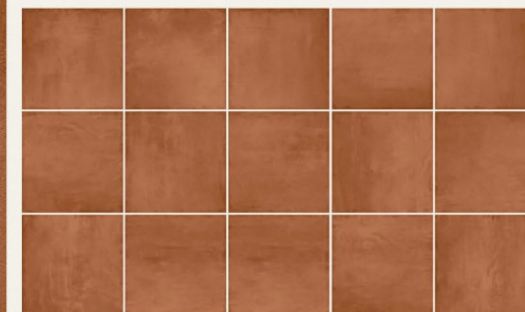
MALTA TERRA



random 15



MALTA TERRA BASE



random 15

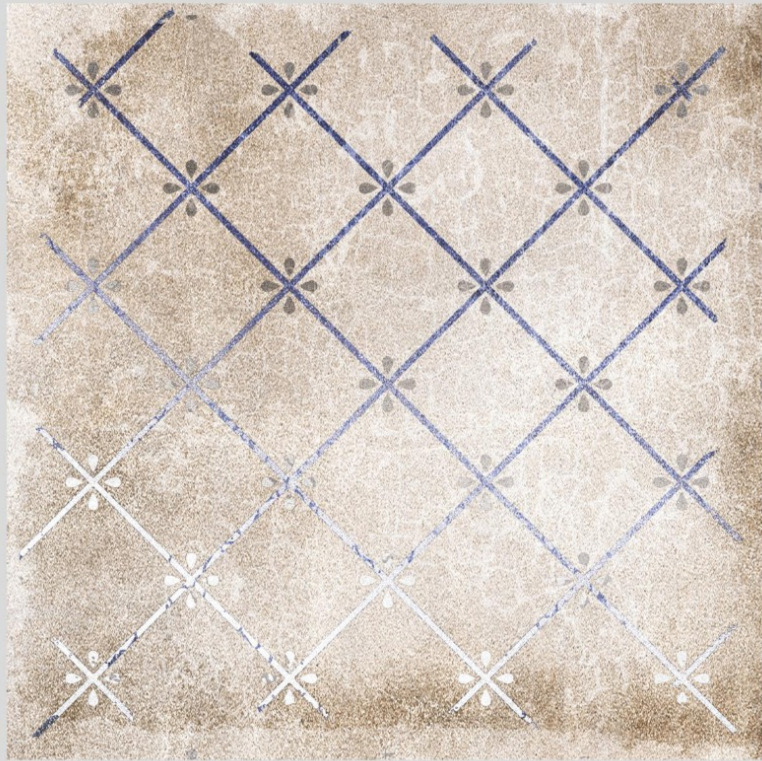






- Chemical Resistant
- Head & Fire Resistant
- Abrasion Resistant
- High Tensile Strength
- Less Water Absorption
- Environment Friendly

200x  
200mm  
matt with luster



PARIS BIANCO



random 09



PARIS BIANCO BASE



random 22

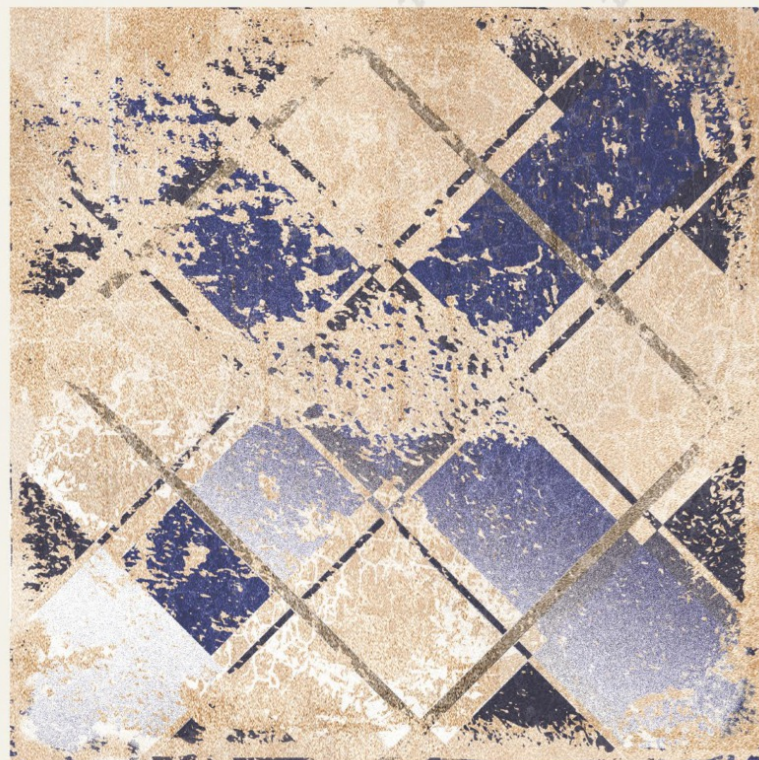








**200x  
200mm**  
matt with luster



PARIS CREMA



random 09



PARIS CREMA BASE

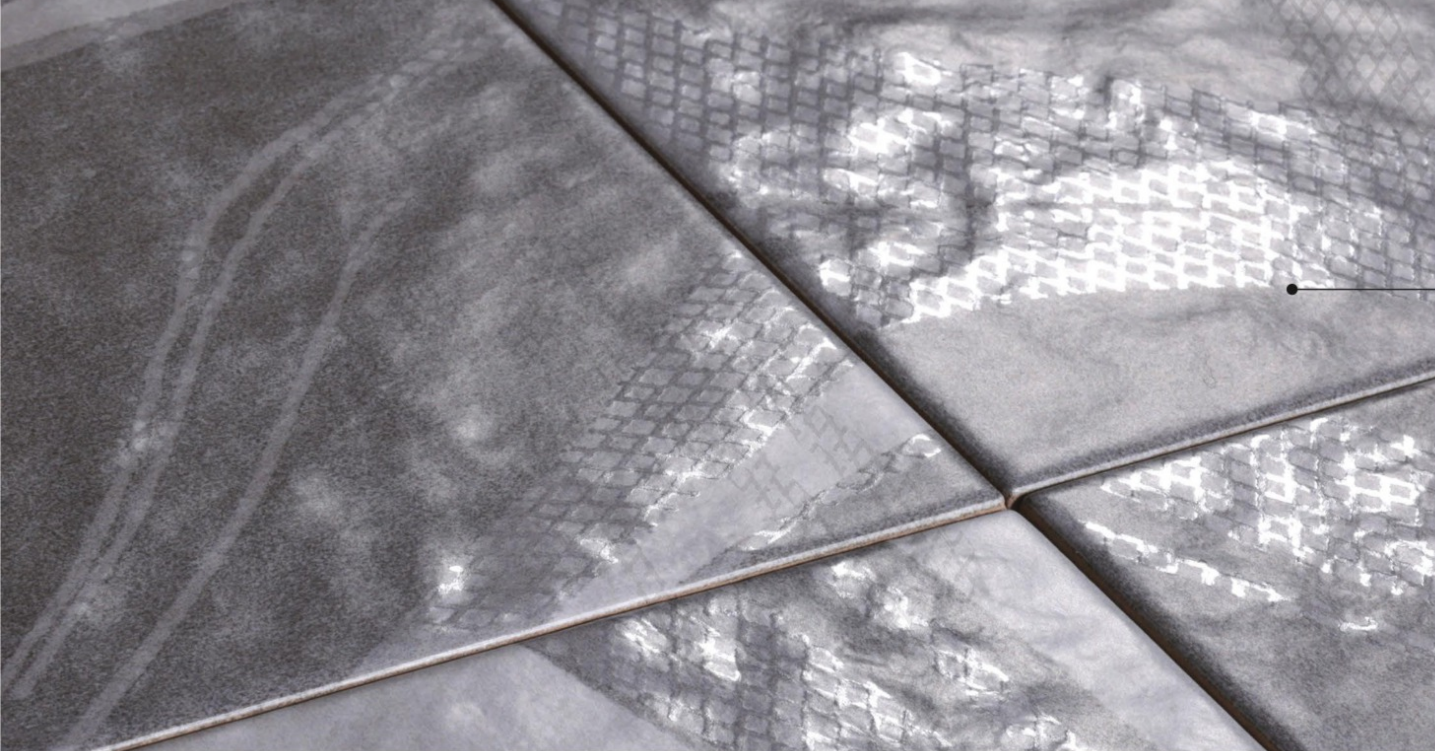


random 22









**200x  
200mm**

matt with luster  
(punch)



Chemical  
Resistant



Heat & Fire  
Resistant



Abrasion  
Resistant



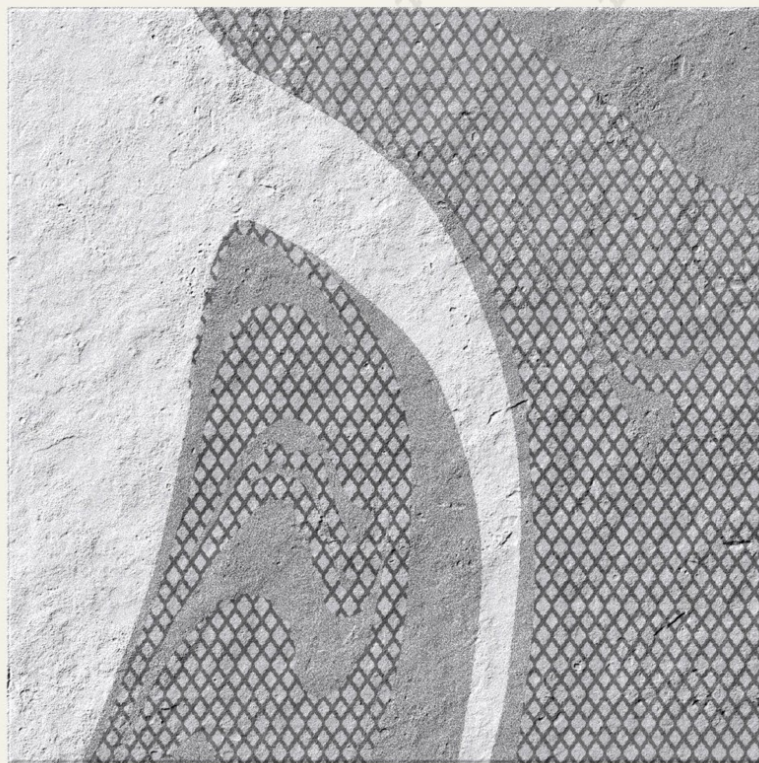
High Tensile  
Strength



Less Water  
Absorption



Environment  
Friendly



CANVAS GRAY



random 25



**miami**  
COLLECTION

[riaec.com](http://riaec.com)









Chemical  
Resistant



Head & Fire  
Resistant



Abrasion  
Resistant



High Tensile  
Strength



Less Water  
Absorption

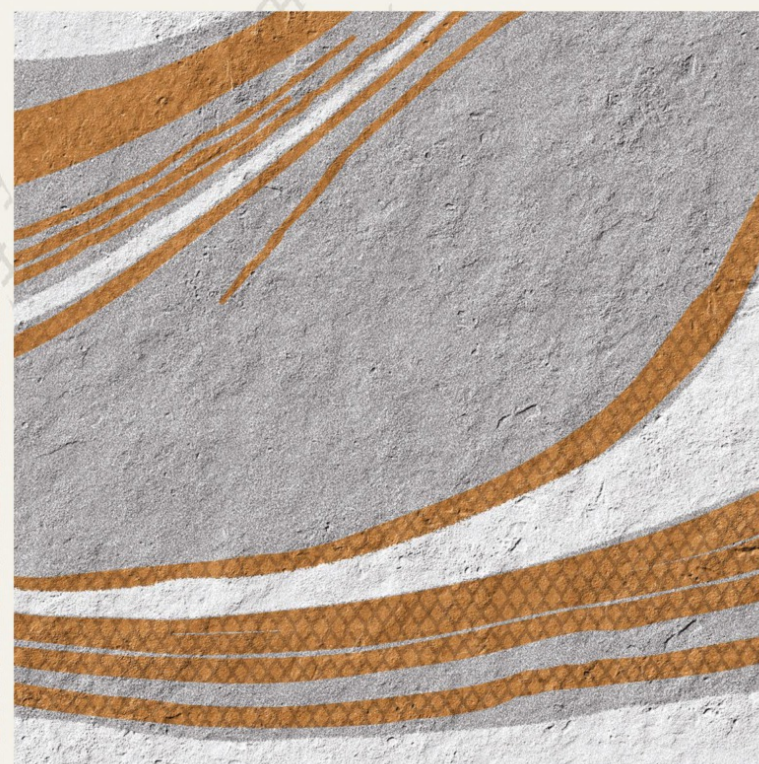


Environment  
Friendly

**200x  
200mm**  
matt with luster  
(punch)



random 25



CANVAS ORANGE

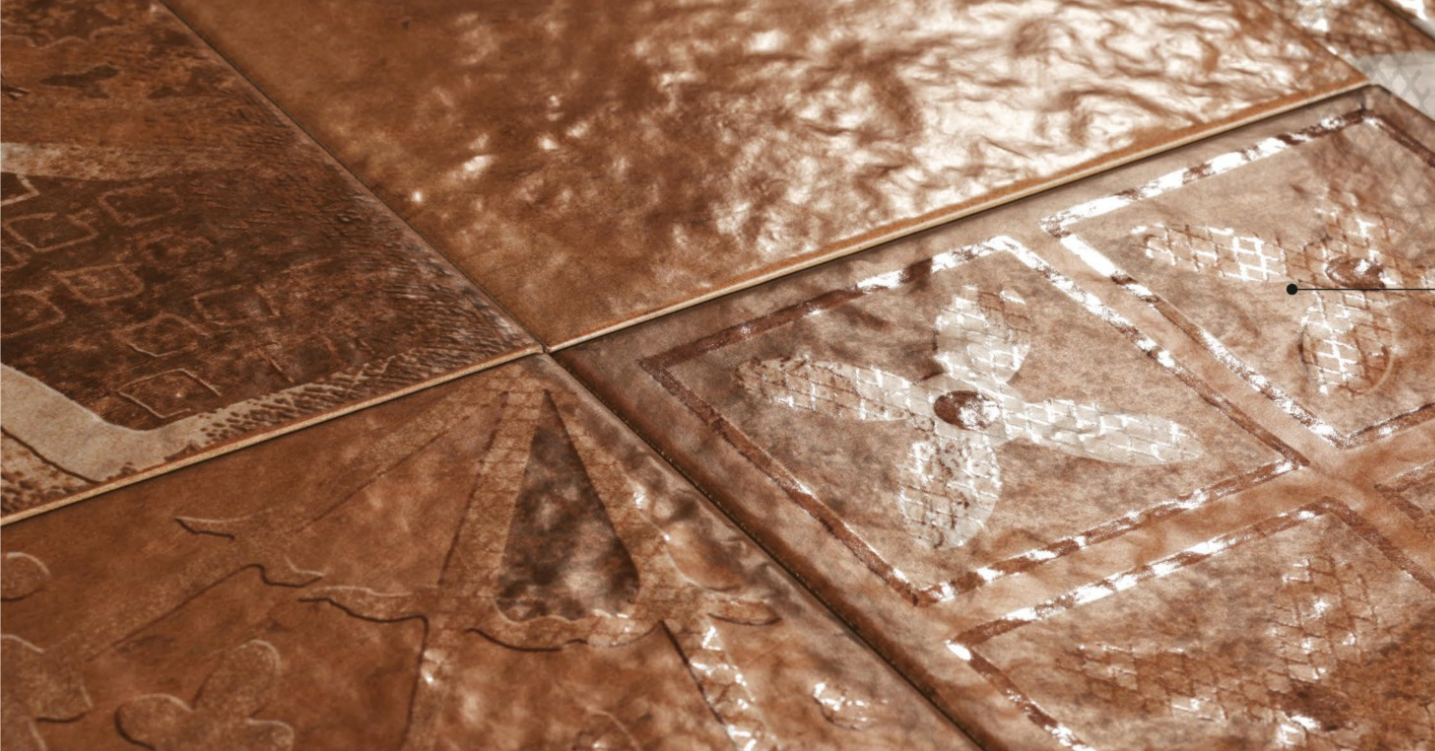
[riaec.com](http://riaec.com)

**miami**  
COLLECTION









**200x  
200mm**

matt with luster  
(punch)



Chemical  
Resistant



Heat & Fire  
Resistant



Abrasion  
Resistant



High Tensile  
Strength



Less Water  
Absorption



Environment  
Friendly



**FORLI BRONZE**



random 18



**FORLI BRONZE**



random 12







- Chemical Resistant
- Head & Fire Resistant
- Abrasion Resistant
- High Tensile Strength
- Less Water Absorption
- Environment Friendly

200x200mm  
 matt with luster  
 (punch)



FORLI DESERT



random 18



FORLI DESERT BASE



random 12







- Chemical Resistant
- Head & Fire Resistant
- Abrasion Resistant
- High Tensile Strength
- Less Water Absorption
- Environment Friendly

200x  
200mm  
matt with luster  
(punch)



LILAC BOTANICAL



random 16



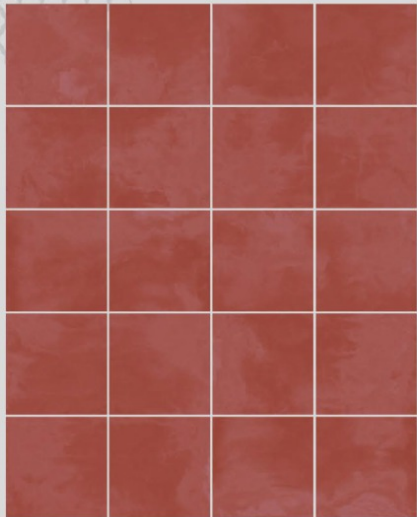
LILAC FRESCO



random 20



LILAC ROSA



random 20







- Chemical Resistant
- Head & Fire Resistant
- Abrasion Resistant
- High Tensile Strength
- Less Water Absorption
- Environment Friendly

200x200mm  
 matt with luster  
 (punch)



LILAC SELVA



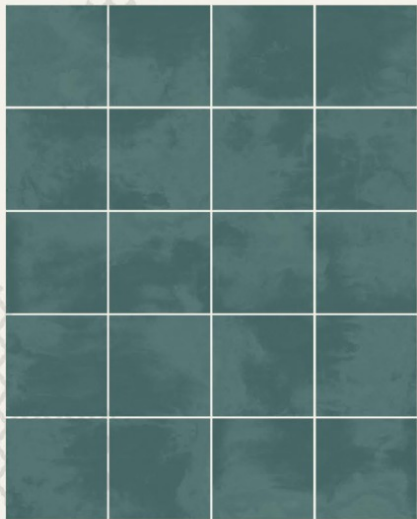
random 16



LILAC GRIS



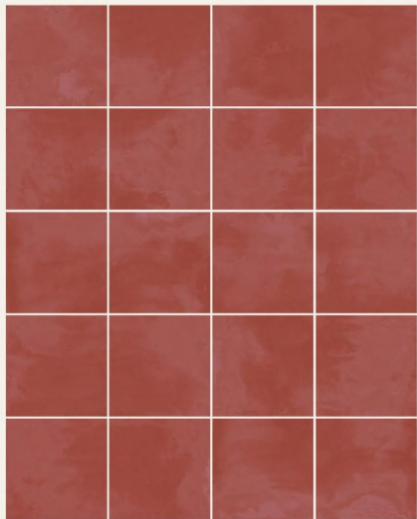
random 16



LILAC FRESCO random 20



LILAC ROSA



random 20

riaec.com

miami  
 COLLECTION

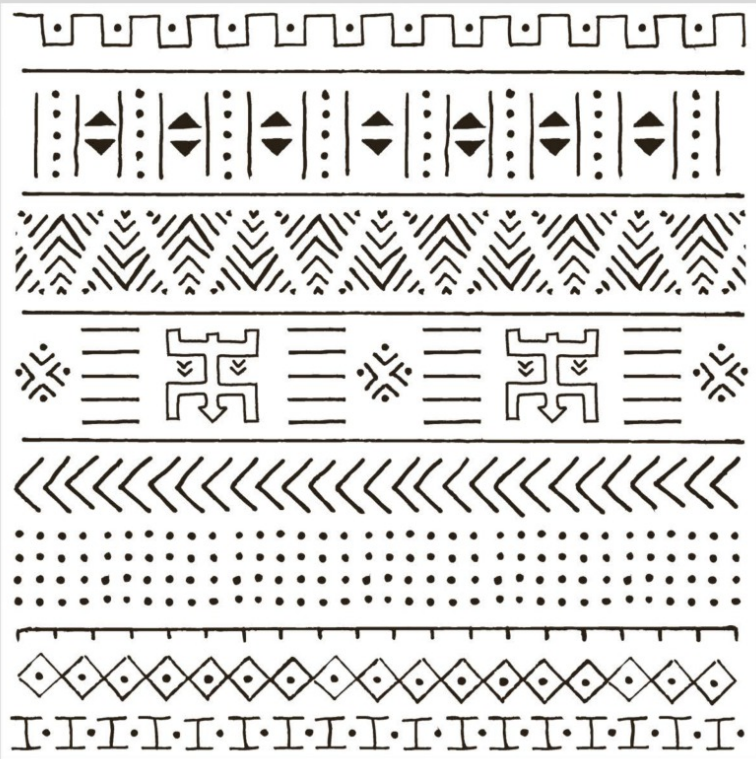
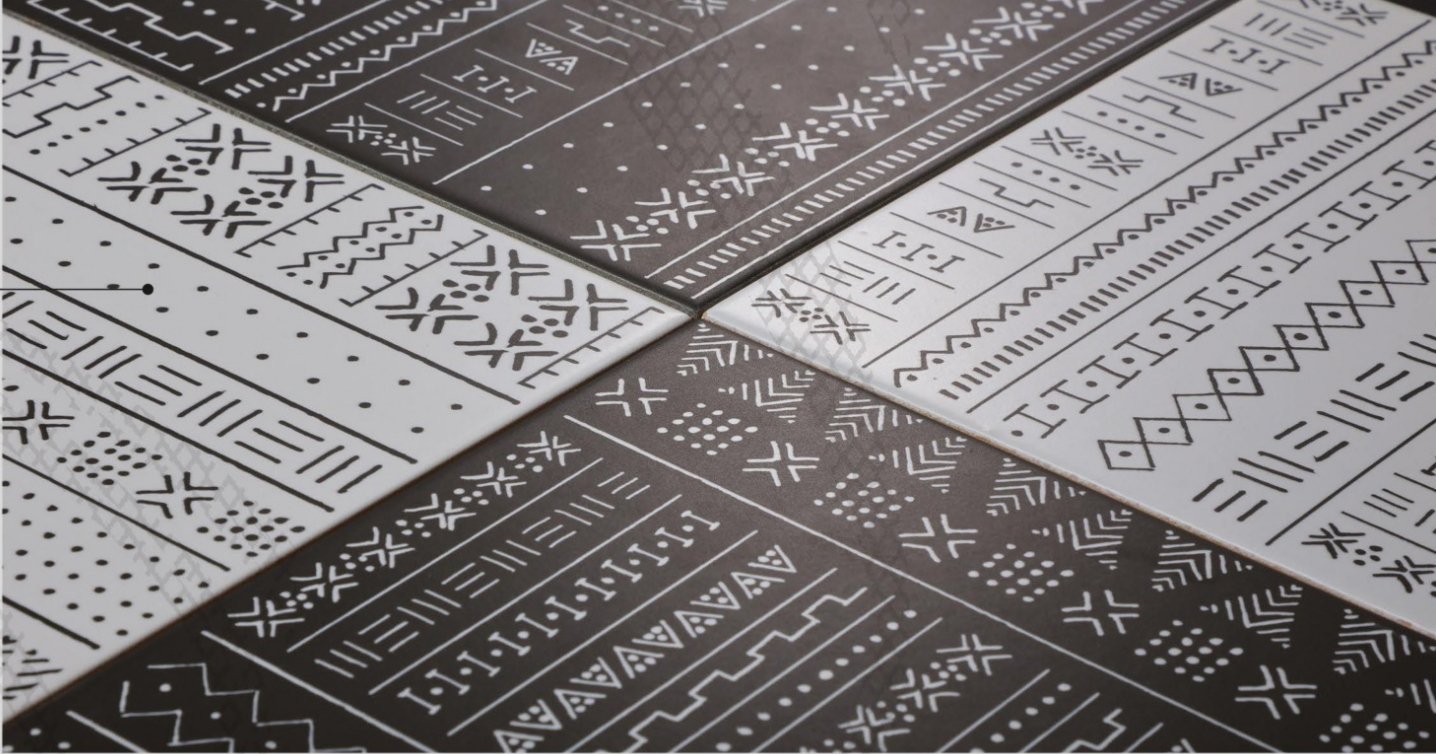




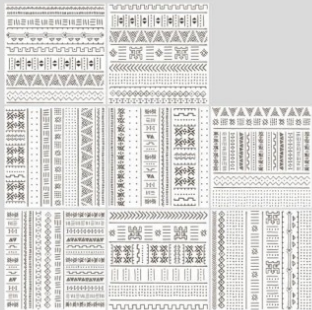


- Chemical Resistant
- Head & Fire Resistant
- Abrasion Resistant
- High Tensile Strength
- Less Water Absorption
- Environment Friendly

200x  
200mm  
matt with luster  
(punch)



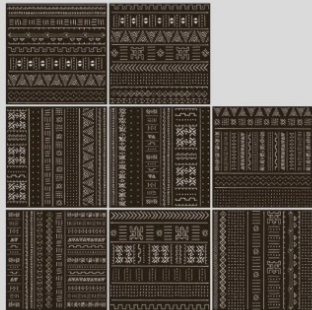
ETHNIC WHITE



random 08



ETHNIC BLACK



random 08







**miami**  
COLLECTION

Size	200x200mm
Thickness	10mm
Pcs/Box	20 pcs.
Kg/Box	13.300 kg.
Coverage Area	8.61 sq. ft./0.800 sq.mtr.

[www.riaec.com](http://www.riaec.com)

RIAEC  
TILES